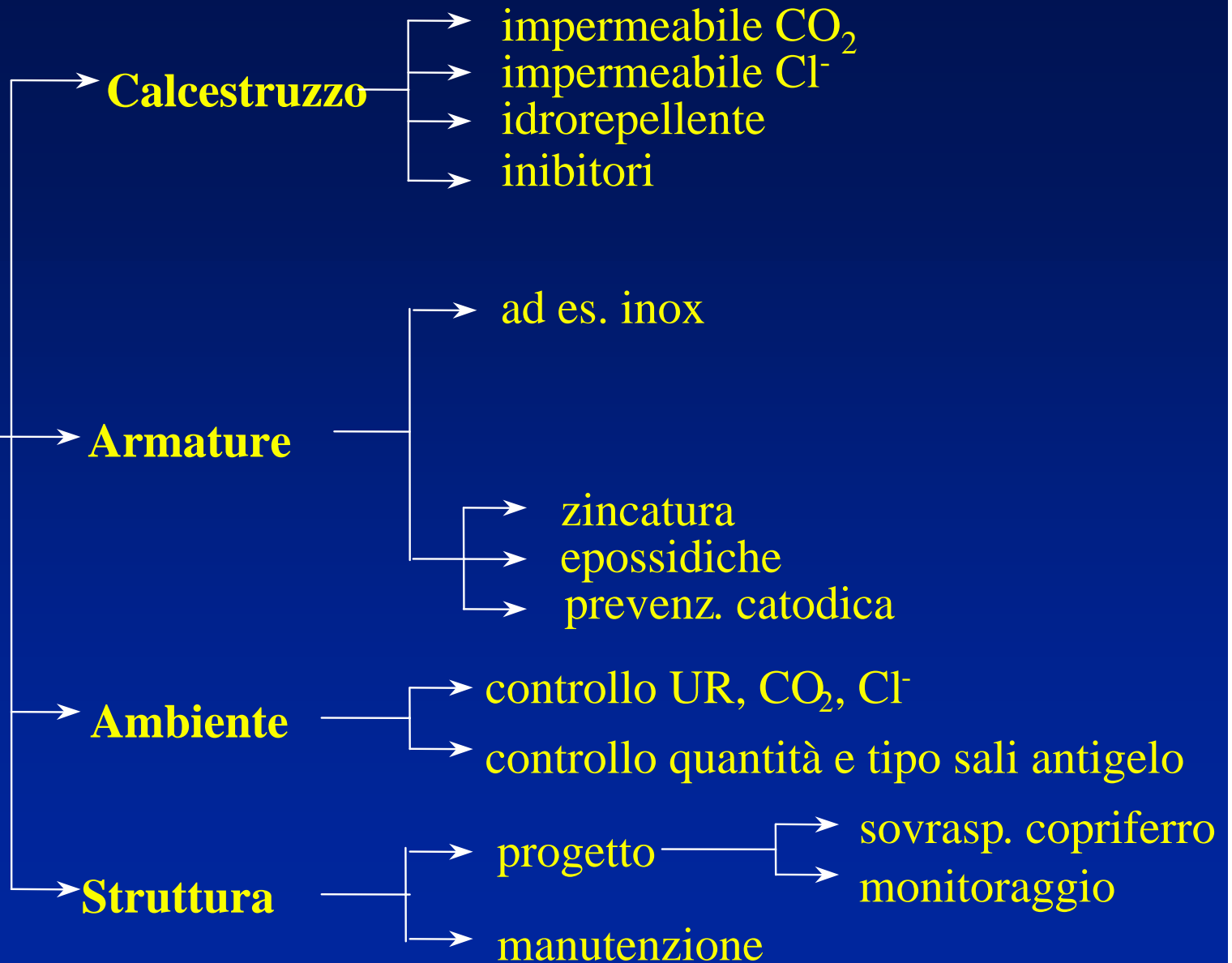


Le protezioni aggiuntive

**Protezioni
aggiuntive
basate su con-
trollo caratte-
ristiche di:**



**Le armature di
acciaio
inossidabile**



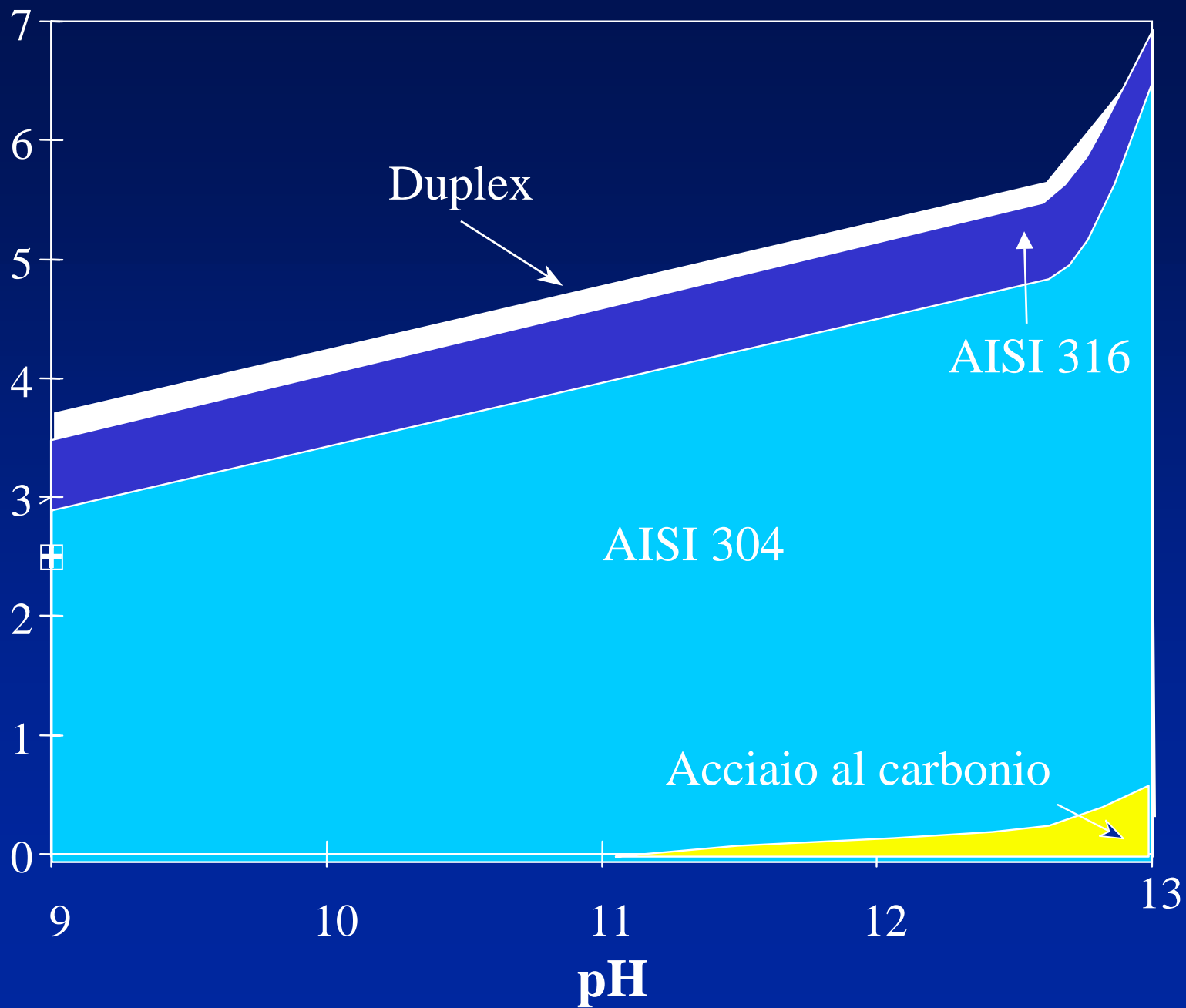
Armature in inox

Acciaio	AISI	EN	
austenitico	304L	1.4307	<0.03% C, 18% Cr, 9% Ni
	316L	1.4404, 1.4436	<0.03% C, 17% Cr, 12% Ni, 2,5-3% Mo
duplex	318	1.4462	<0.03% C, 22% Cr, 5% Ni, 2,5-3% Mo

Comportamento alla corrosione

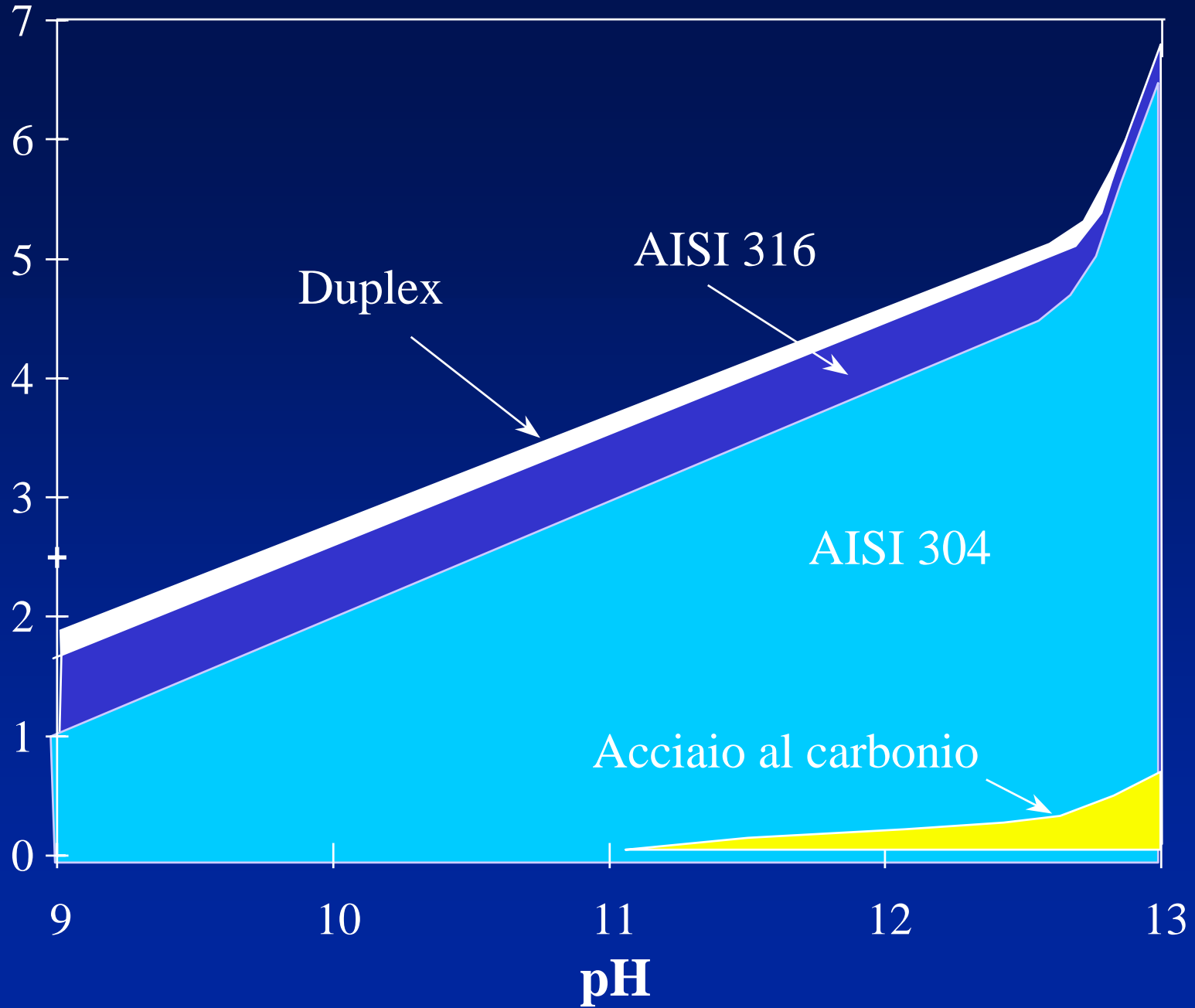
20°C

Cl⁻ (% in peso di cemento)



40°C

Cl⁻ (% in peso di cemento)



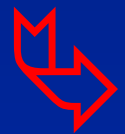
**Accoppiamento
tra armature
di inox
e di acciaio al
carbonio**

**Armature di inox
e restauro di
opere
interessate
da corrosione**

Altri benefici



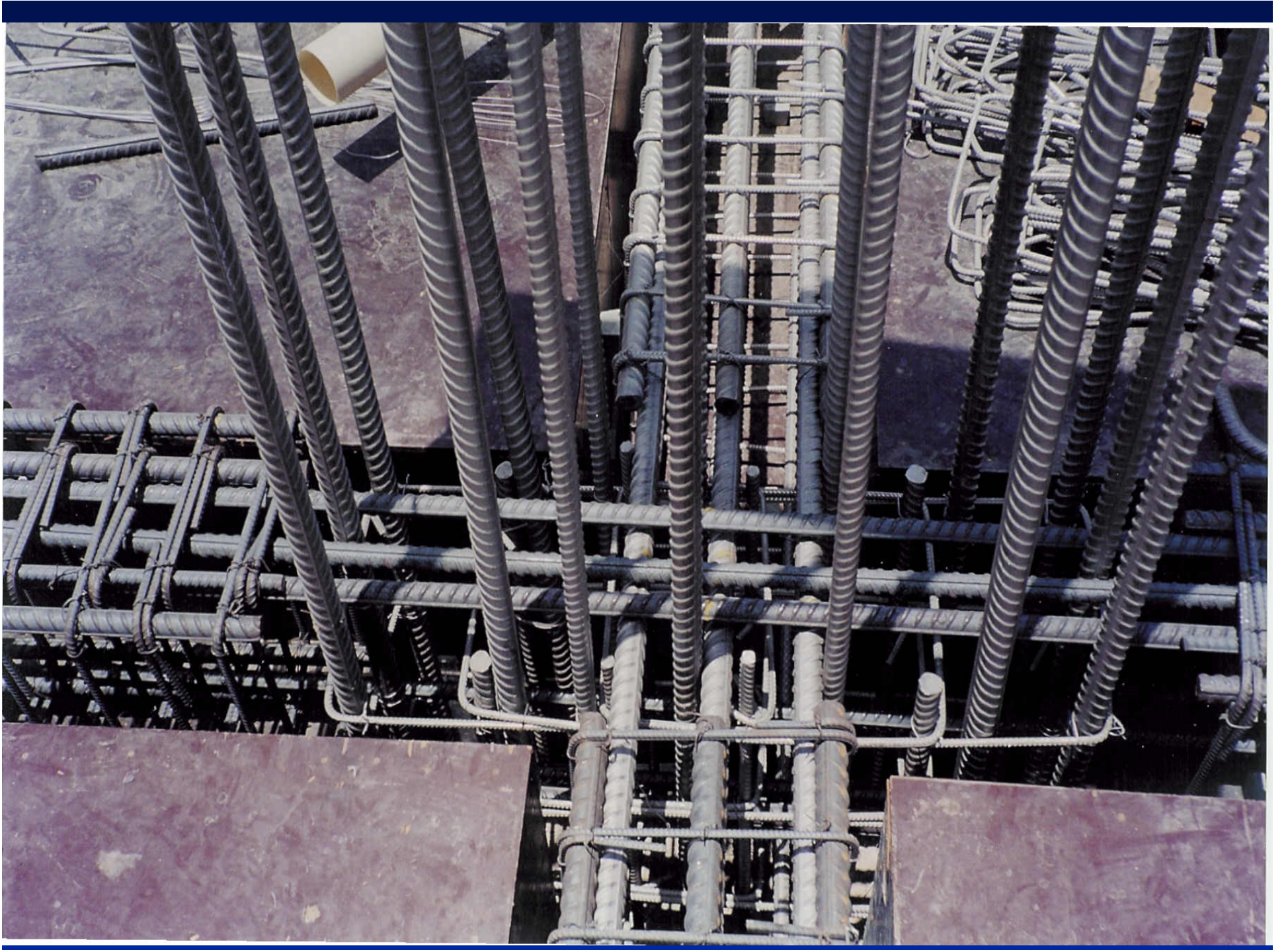
**Riduzione dello spessore
di copriferro**

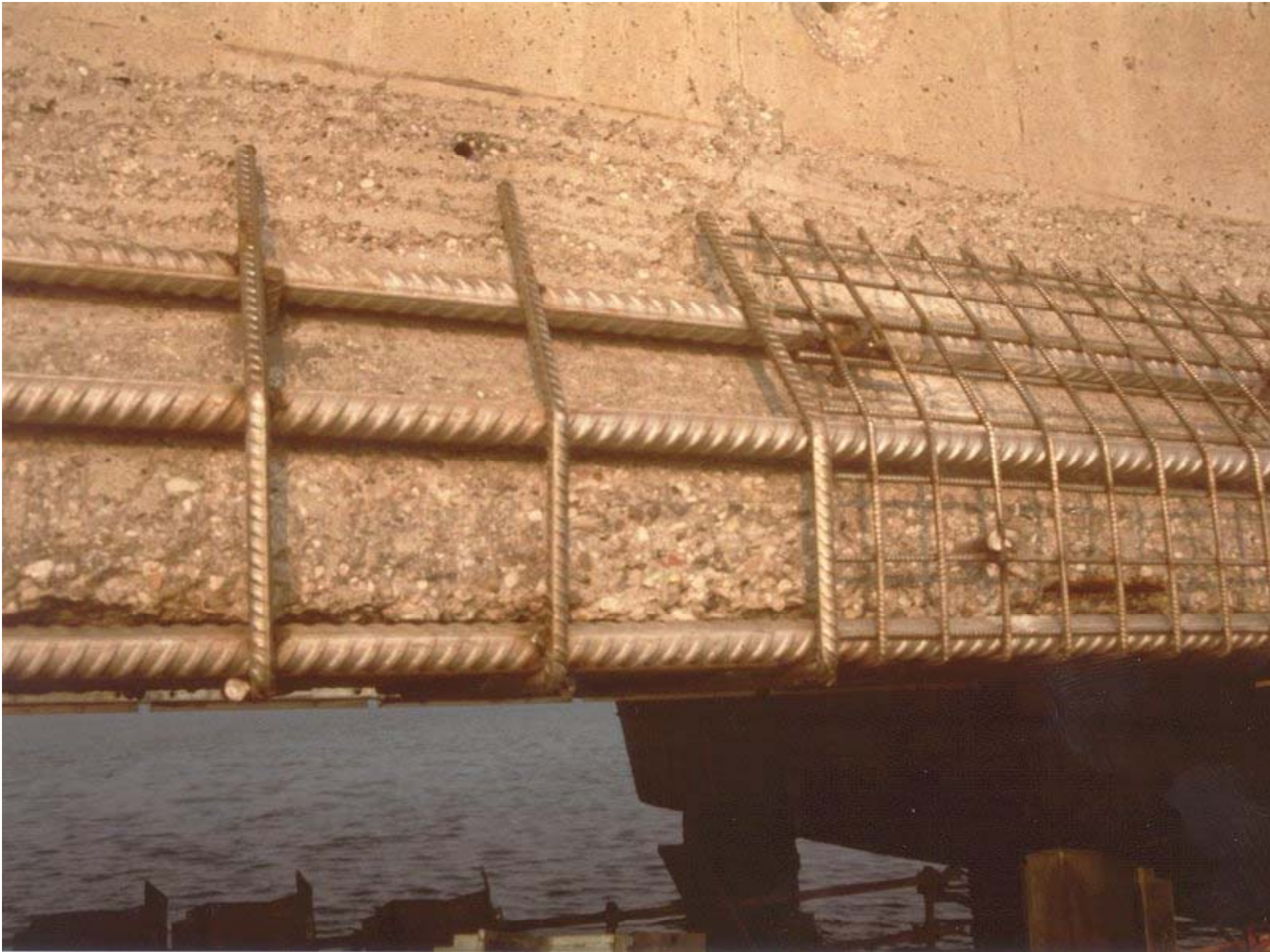


**Aumento dell'ampiezza
delle fessure**

Alcune applicazioni

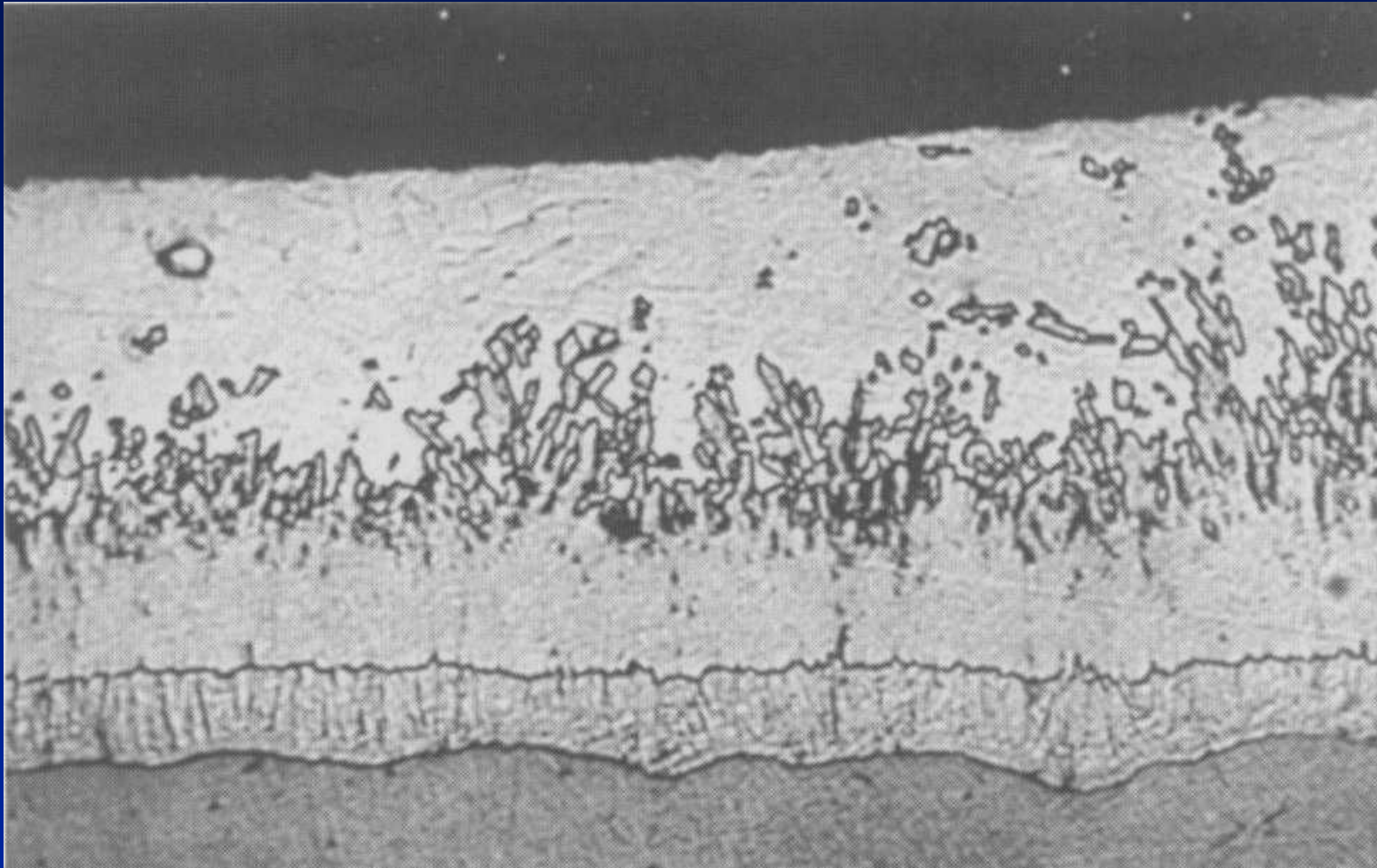






Armature zincate

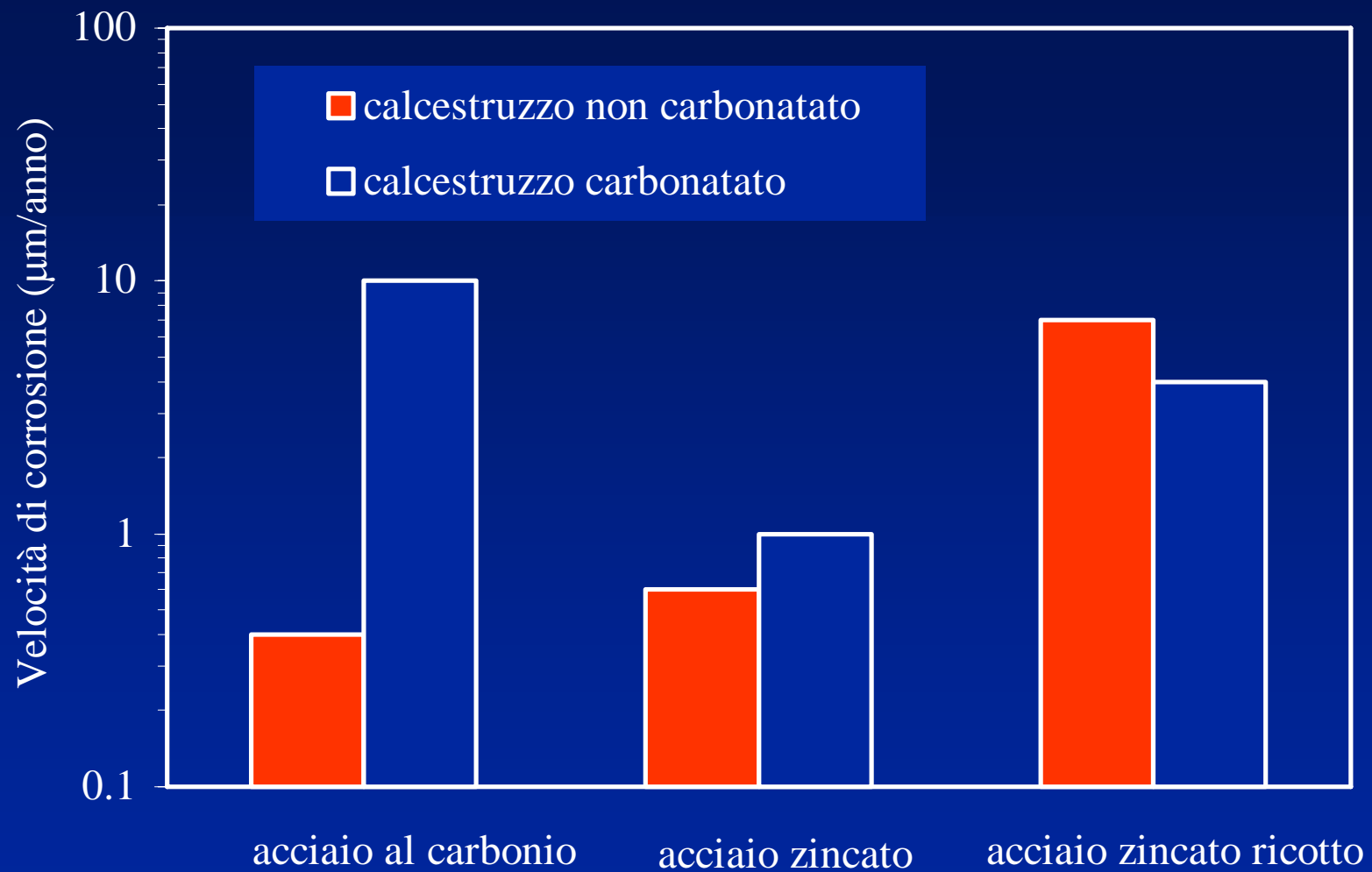


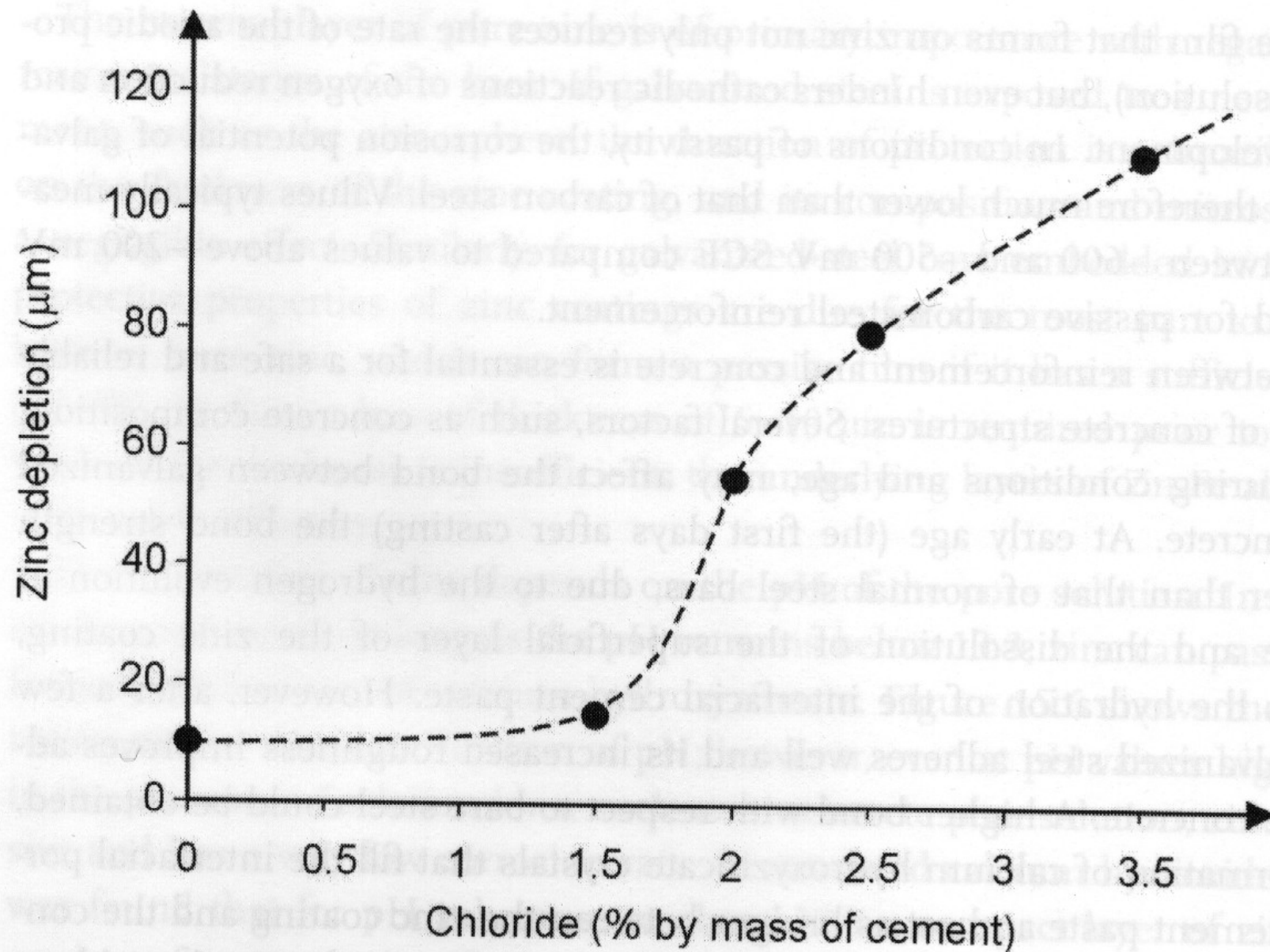


Zinco

Lega
Ferro-Zinco

Acciaio









Sidney Opera House, 1972



Chiesa "Dives in Misericordia" Roma (Meier, 2003)

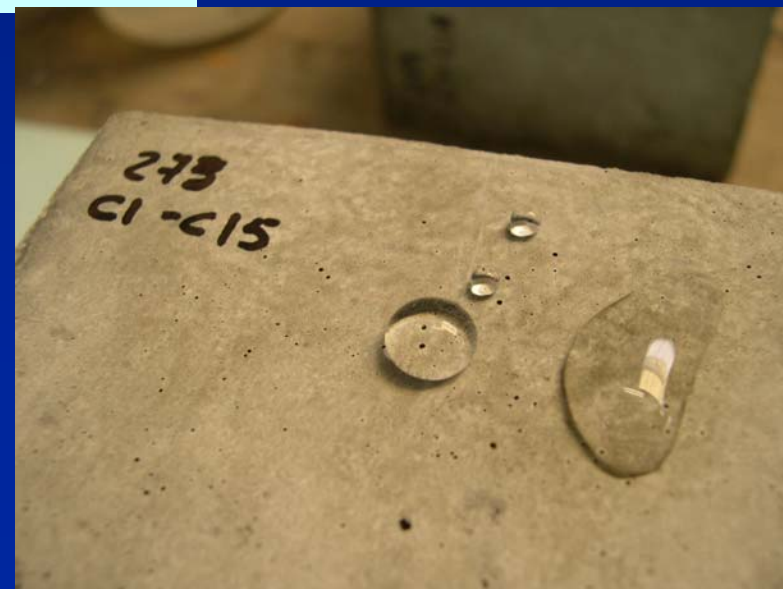
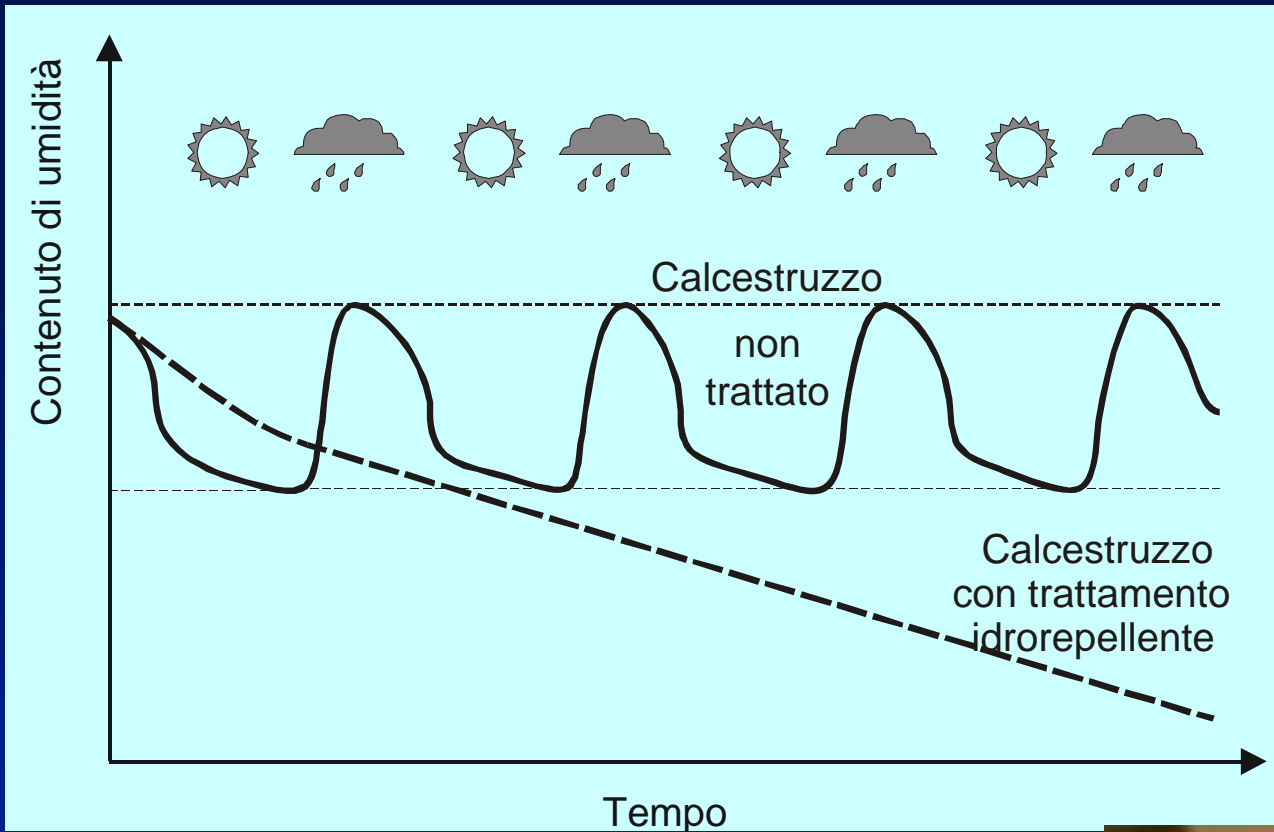


Grande Moschea, Roma (Paolo Portoghesi, 1995)

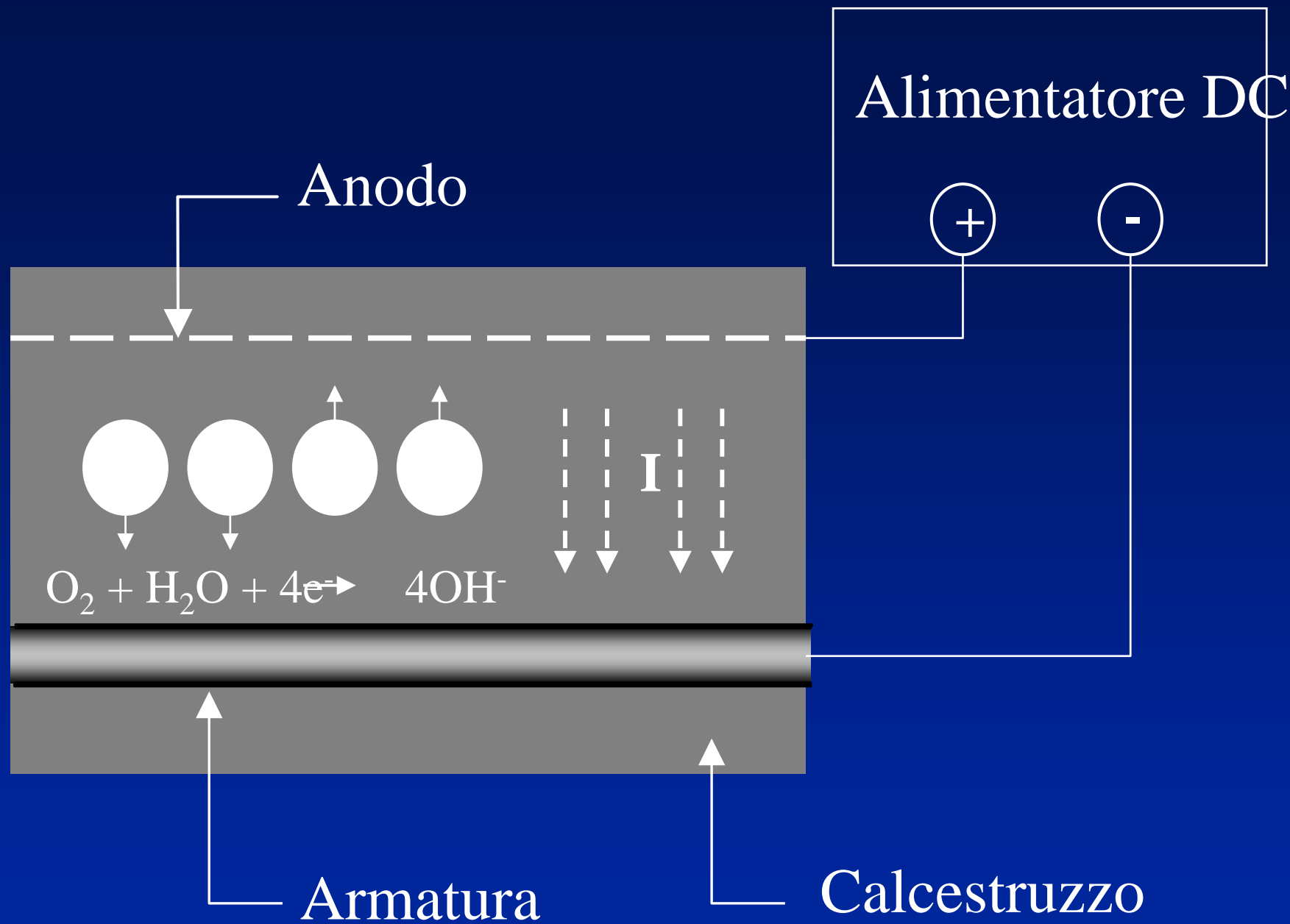
**Armature
rivestite con
epossidica**

Inibitori di corrosione

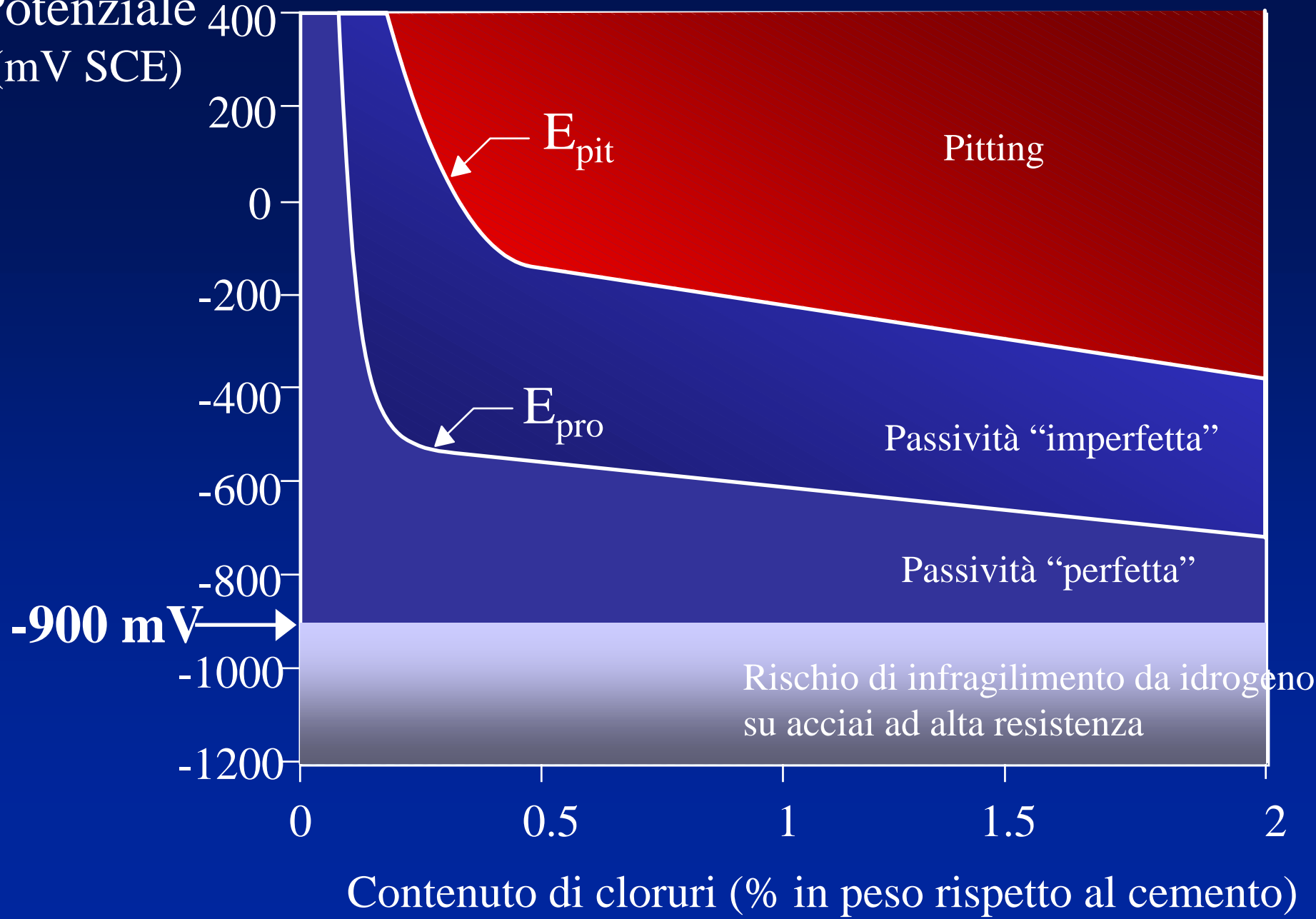
Trattamenti idrorepellenti



Prevenzione e protezione catodica

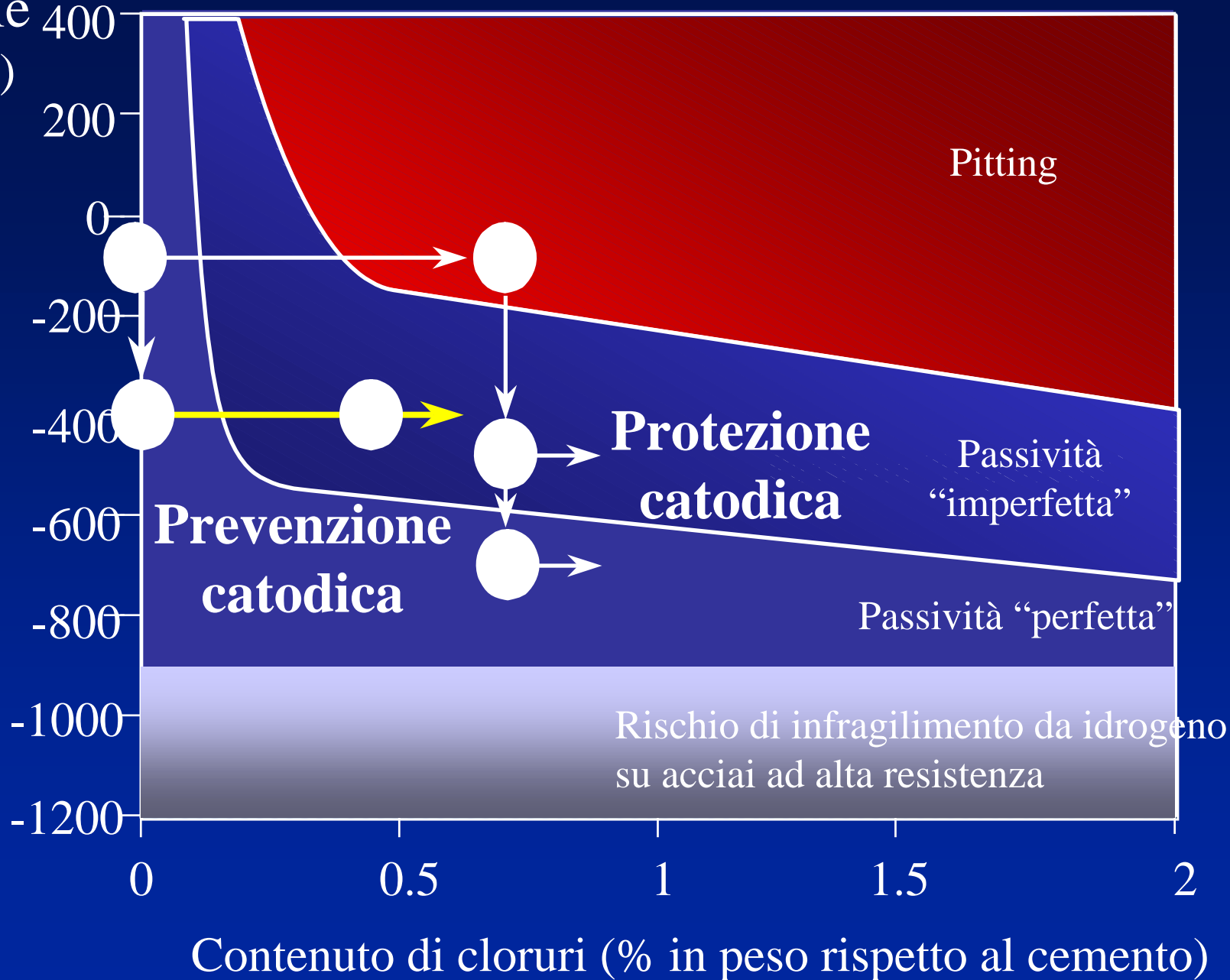


Potenziale
(mV SCE)



Contenuto di cloruri (% in peso rispetto al cemento)

Potenziale
(mV SCE)



ESEMPI DI APPLICAZIONE

Viadotto 1

- Viadotto anni '90
- Appennino



Viadotto 1








- Protezione Catodica
- Rete di Ti/att.
















Vite di servizio

	Arm. di inox	nessun limite
	Arm. di acciaio zincato	100 anni
	Inibitori	incertezza (fessure)
	Rivestimenti	10-15 anni
	Trattamenti idrofobici	10-15
	Prevenzione catodica	30 anni
	Protezione catodica	20-30 anni

Costi iniziali

	Acciaio al carbonio	1
	Acciaio zincato	2
	Inossidabili	8-10
	Inossidabili al 50%	4-5
	Inibitore (s.q.)	30 €/m³
	Rivestimenti	10-50 €/m²
	Trattamenti idrofobici	10 €/m²
	Prevenzione catodica	100 €/m²
	Protezione catodica	200 €/m²

Costi di manutenzione

- ↪ Rivestimenti
- ↪ Trattamenti idrofobici
- ↪ Prevenzione catodica
- ↪ Protezione catodica