

SPIC S.r.l.  
31033 Castelfranco Veneto (TV)  
via Sile, 20

**SPIC** S.r.l.  
**IMPALCATI PER PONTI E VIADOTTI**



AUTOCAMIONALE DELLA CISA

**AUTOSTRADA DELLA CISA A 15**  
Raccordo Autostradale A15/A22  
Corridoio plurimodale Tirreno - Brennero

# **Ponte sul fiume Taro**

---

## **Bridge over Taro River**



Tel. +39 0423 460 111 Fax. +39 0423 460 160 [www.spicsrl.it](http://www.spicsrl.it) e-mail: [info@spicsrl.it](mailto:info@spicsrl.it)

**Employer:**



AUTOCAMIONALE DELLA CISA S.p.A.

**Project:**



**Main contractor:**



**Subcontractor:**



**Main Features:**

- 21+21 spans continuous bridge - steel & concrete composite deck
- Max span = 100 m
- Total length = 1936,8 m
- Width = 13,50 + 13,50 m

**Construction method:**

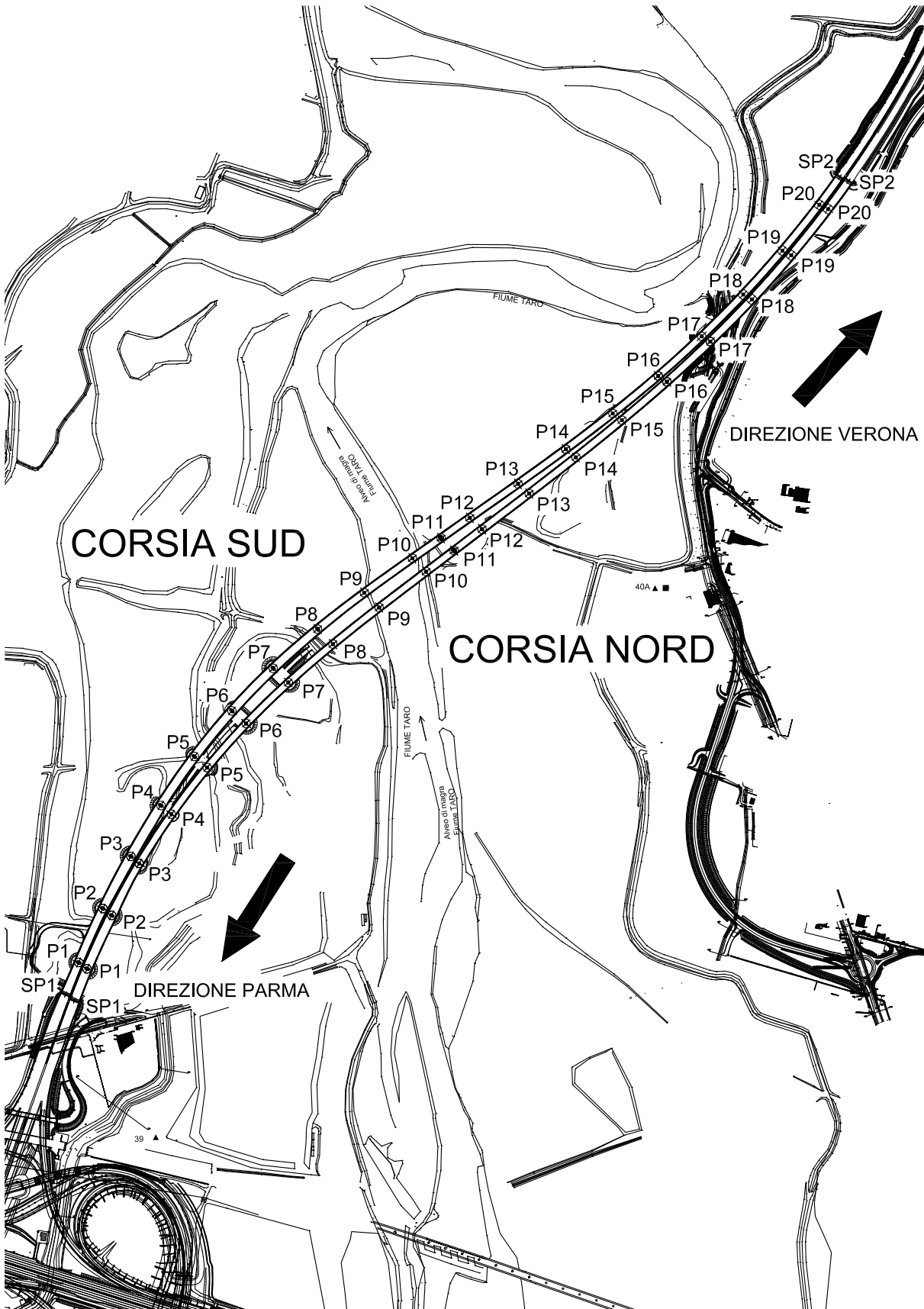
- Segmental balanced cantilever construction by using of cranes

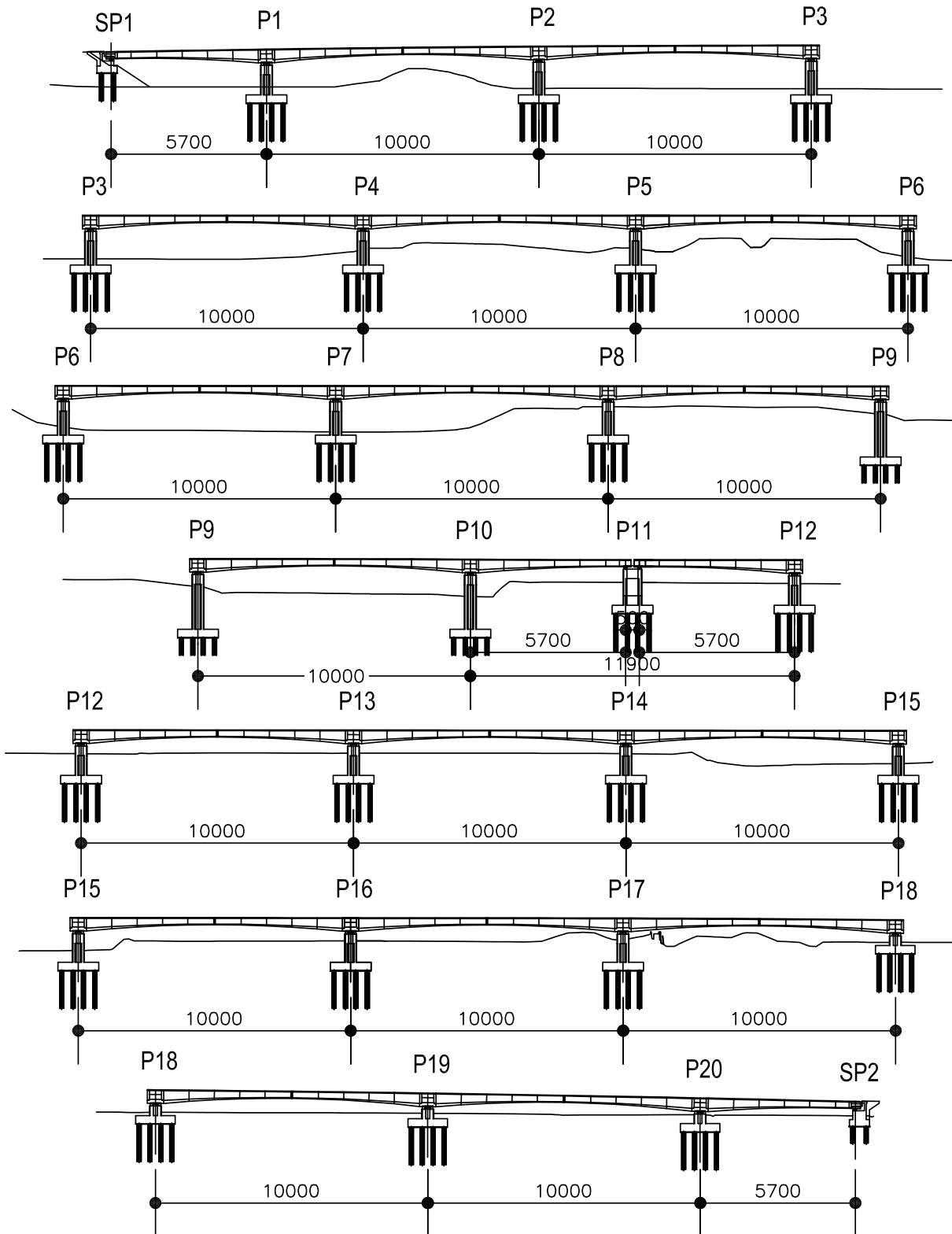
**Scope of Works:**

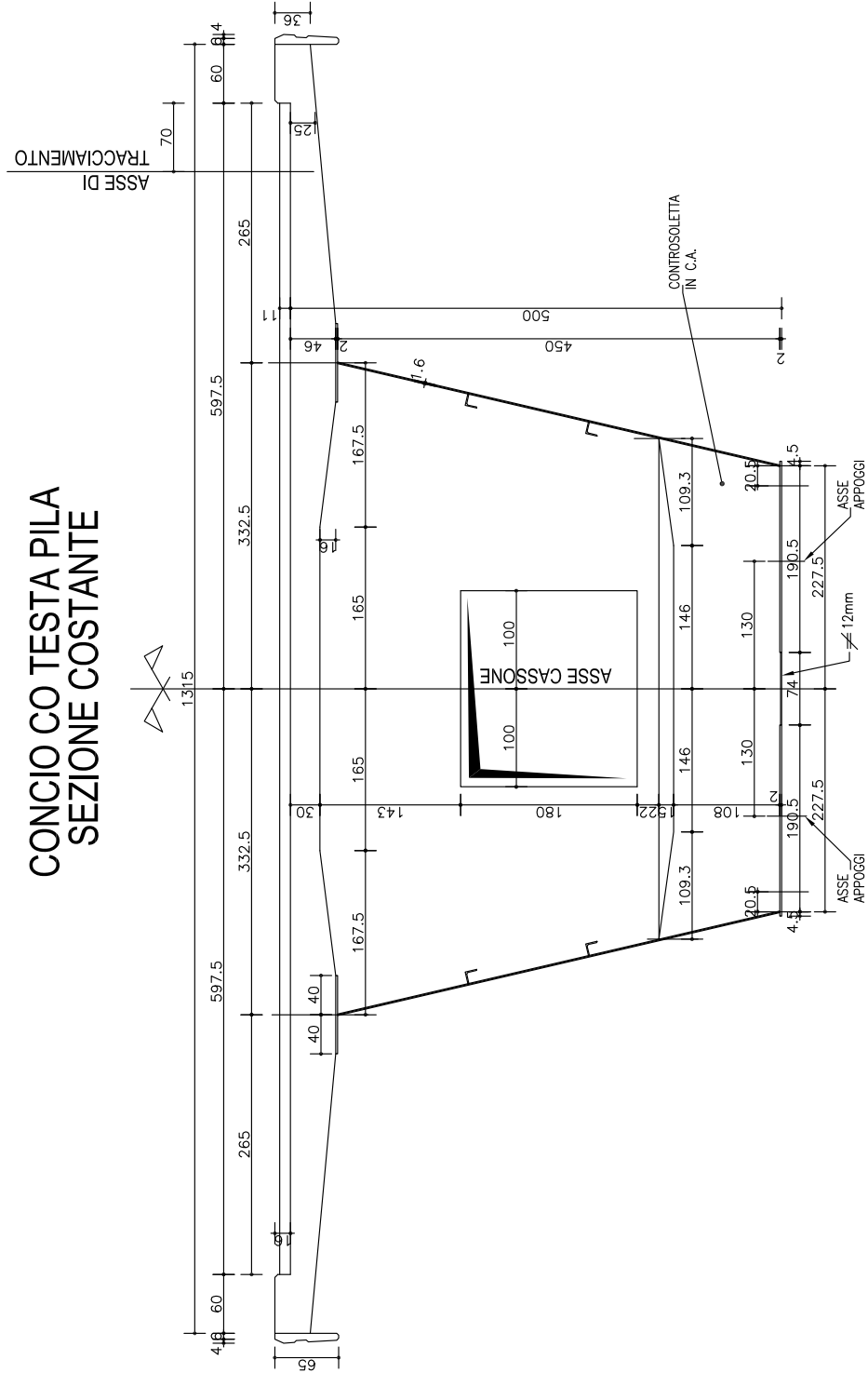
- Supply of equipment and deck construction

**Project amount:**

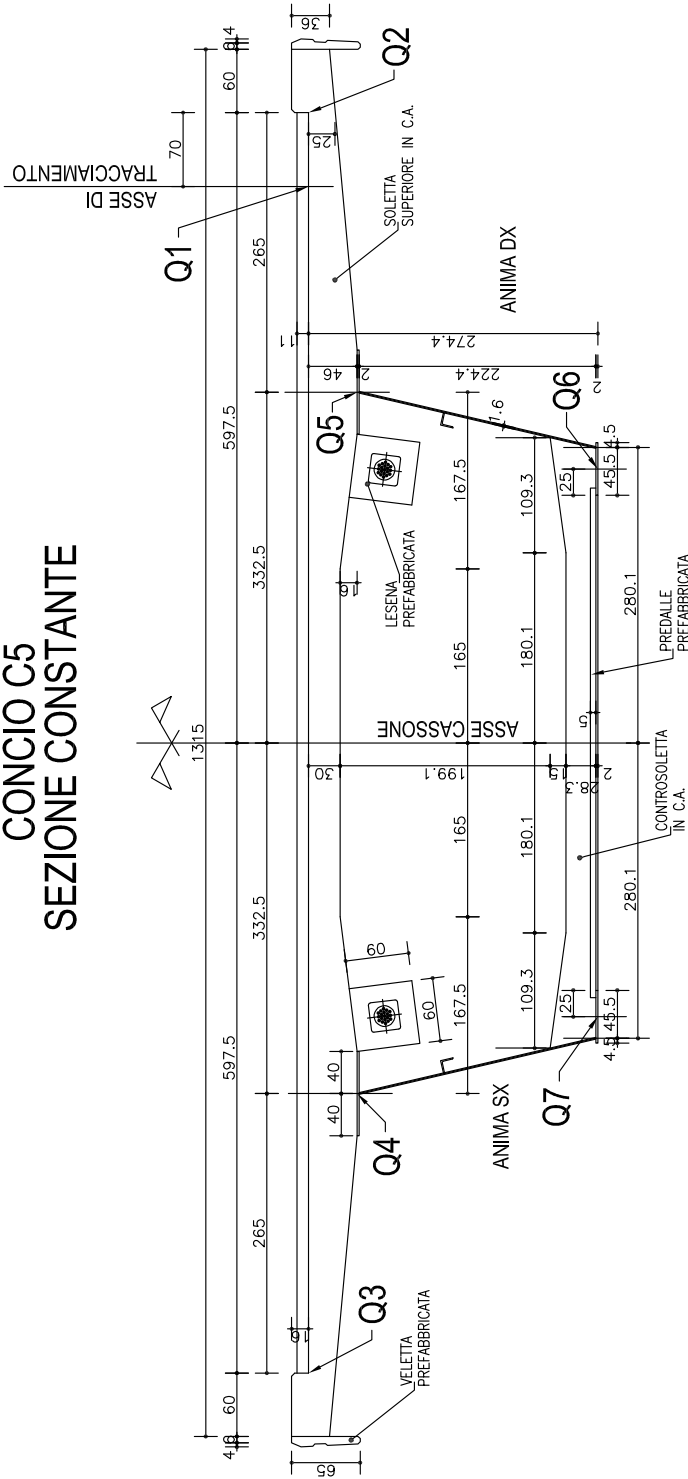
- 14.000.000,00 €



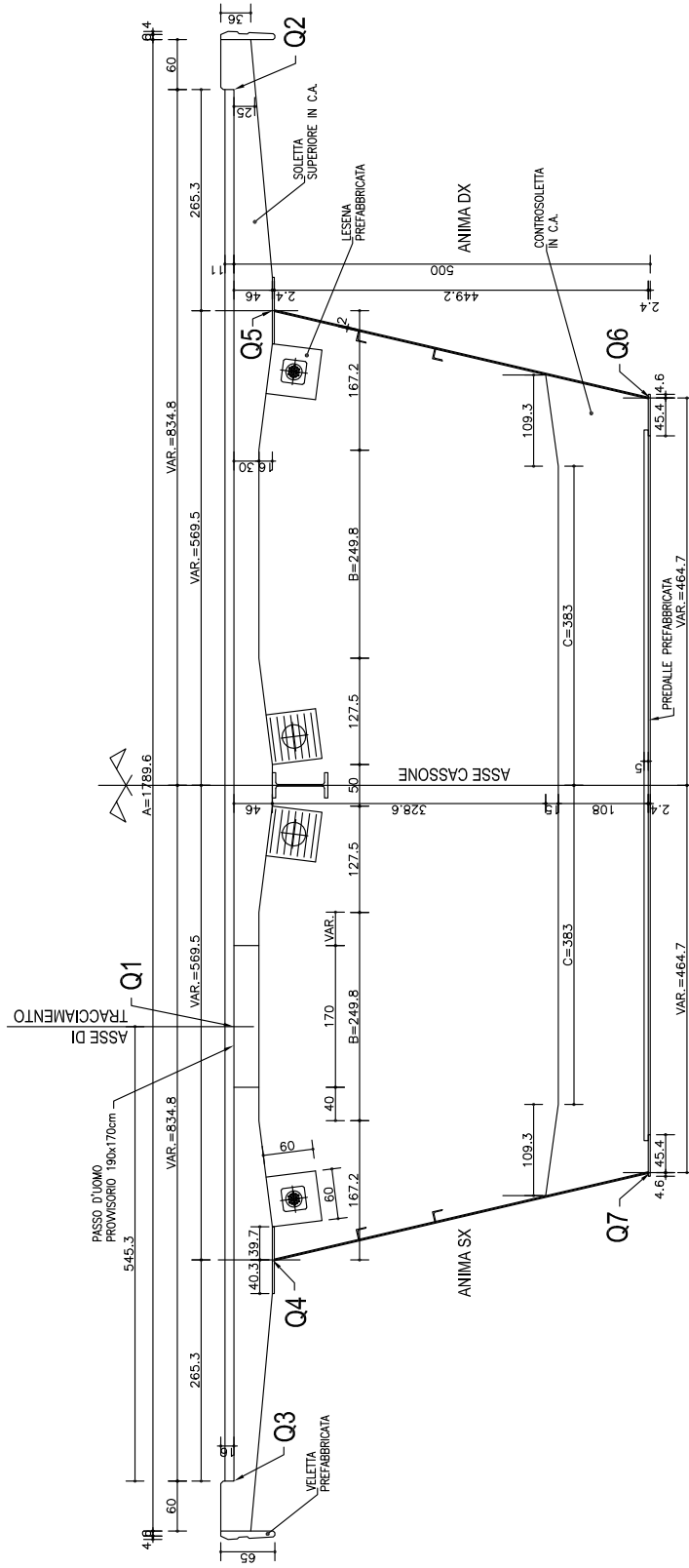




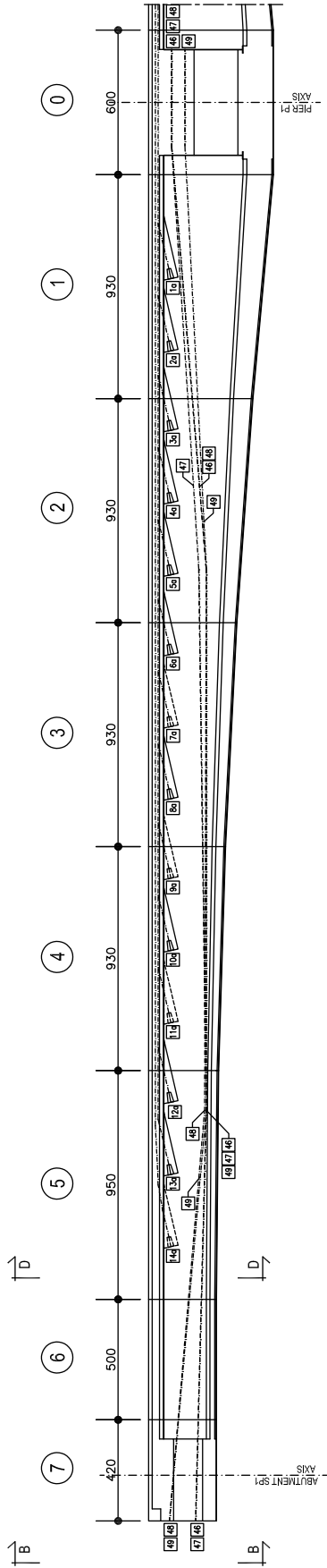
**CONCIO C5  
SEZIONE COSTANTE**



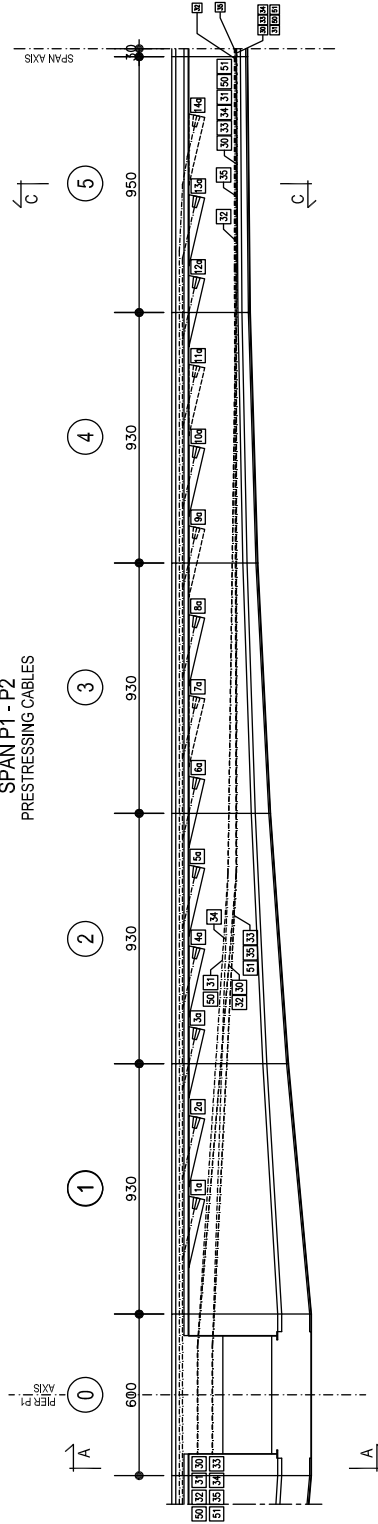
**CONCIO C1  
SEZIONE VARIABILE**



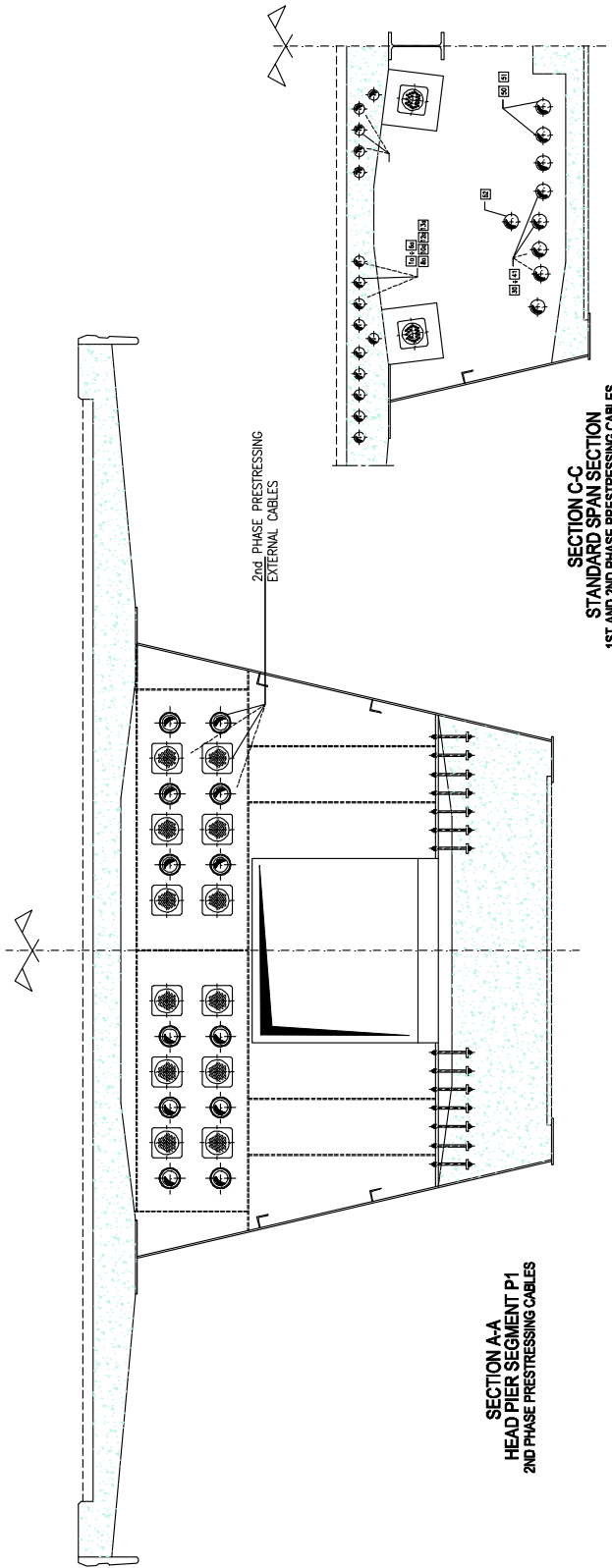
LONGITUDINAL SECTION  
SPAN SP1-P1  
PRESTRESSING CABLES



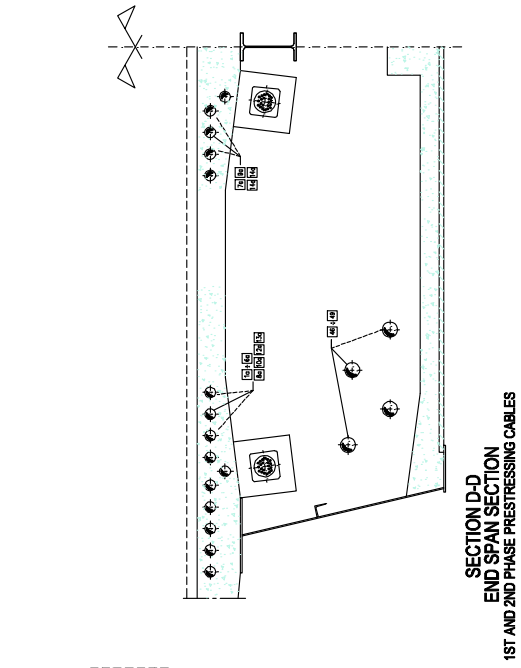
LONGITUDINAL SECTION  
SPAN P1 - P2  
PRESTRESSING CABLES



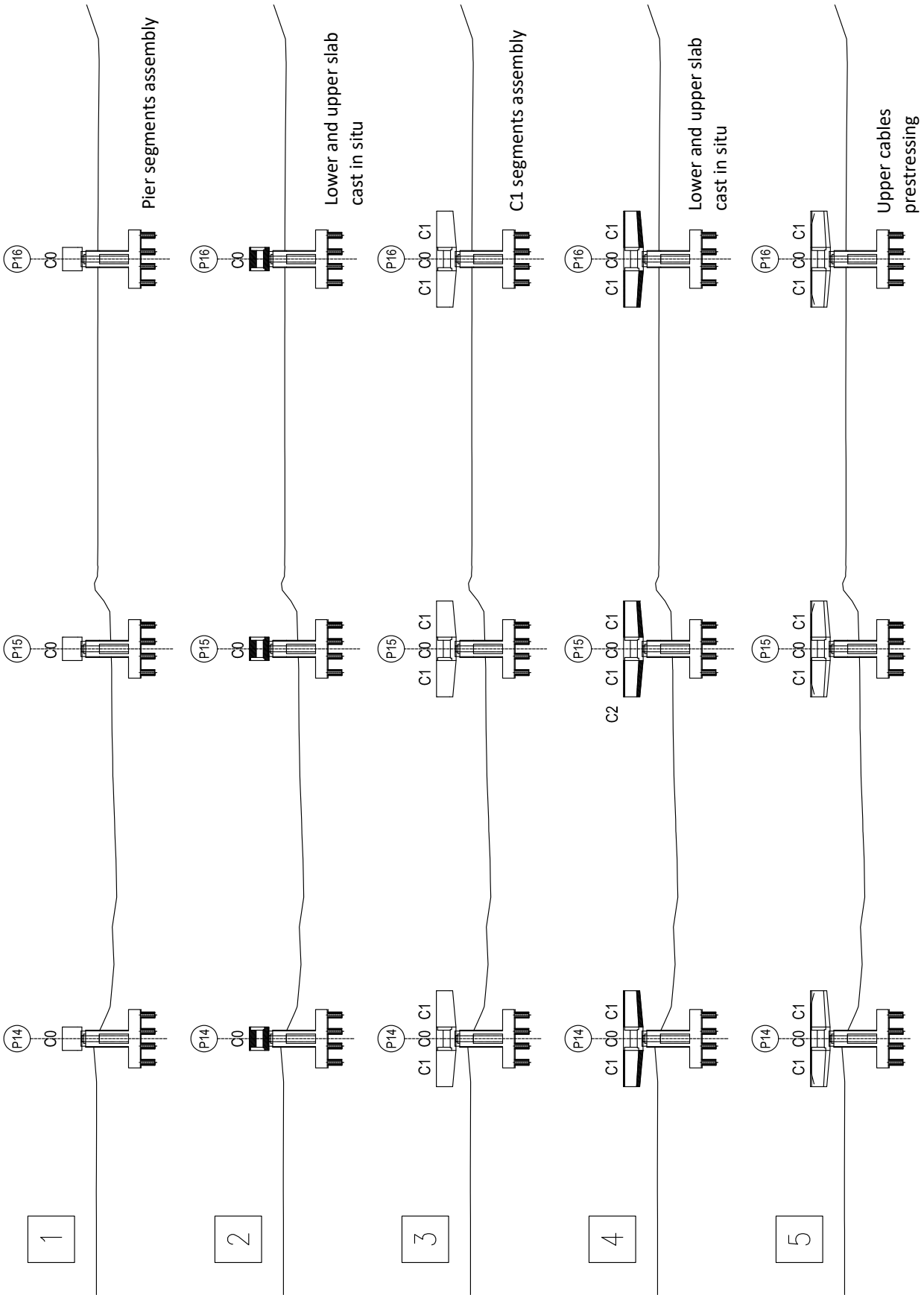


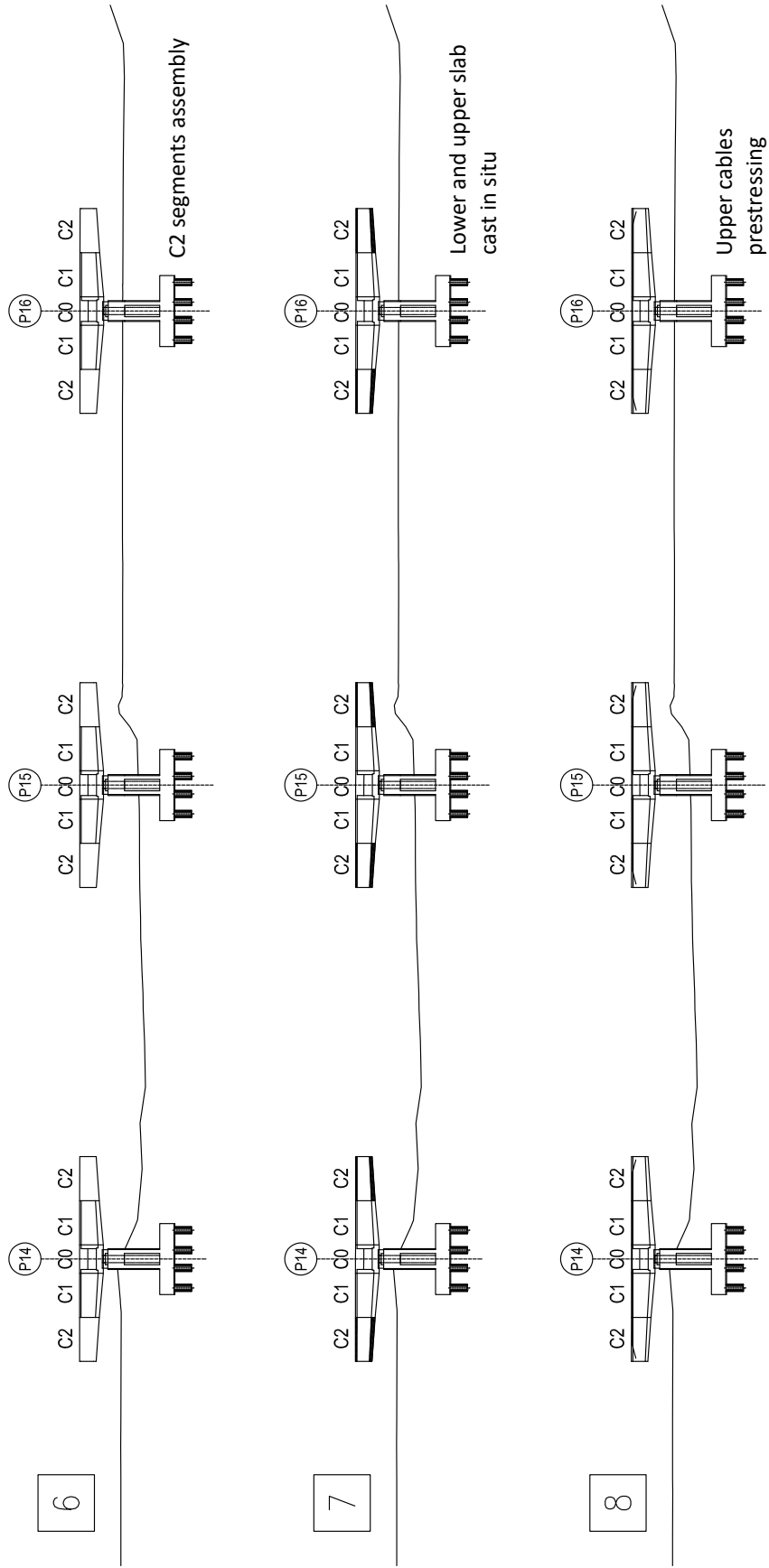


**SECTION C-C**  
STANDARD SPAN SECTION  
1ST AND 2ND PHASE PRESTRESSING CABLES



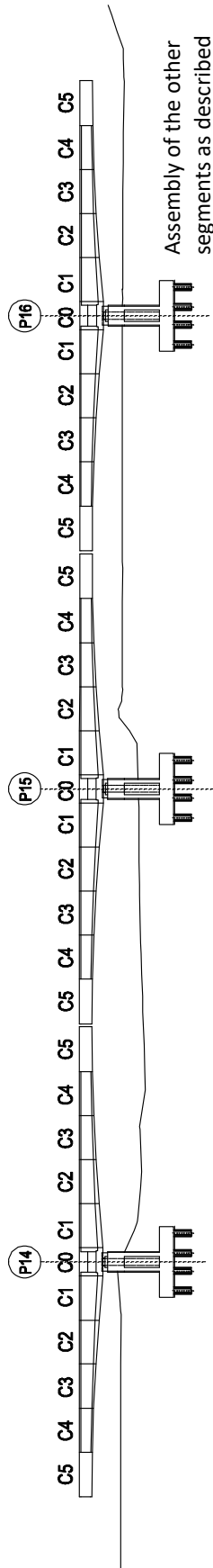
**SECTION B-B**  
ABUTMENT SEGMENT SP1  
2ND PHASE PRESTRESSING CABLES



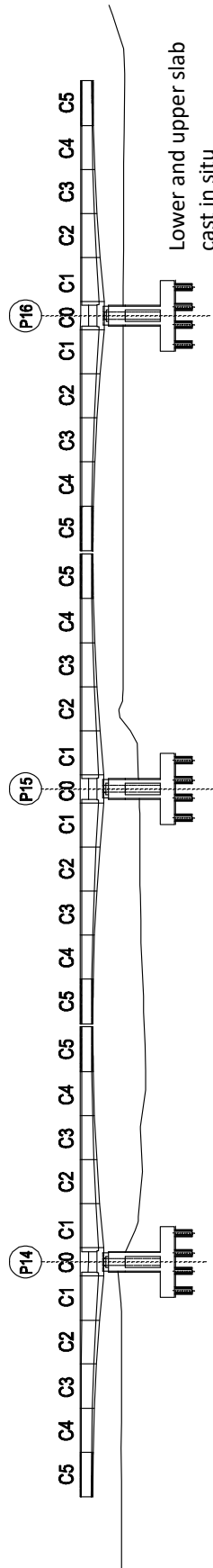


Mounting phases

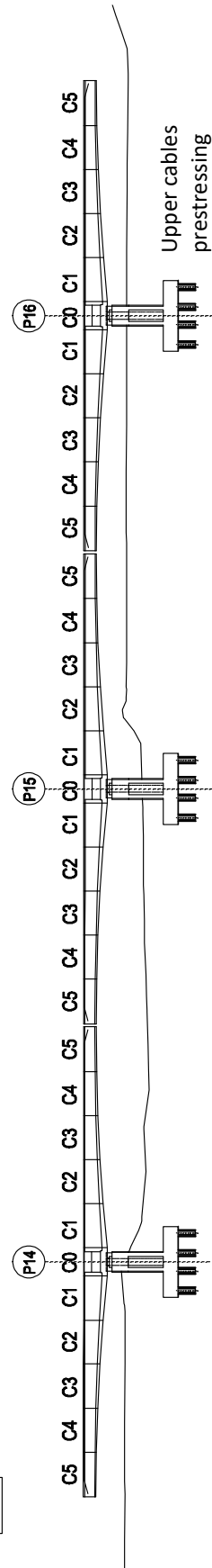
9



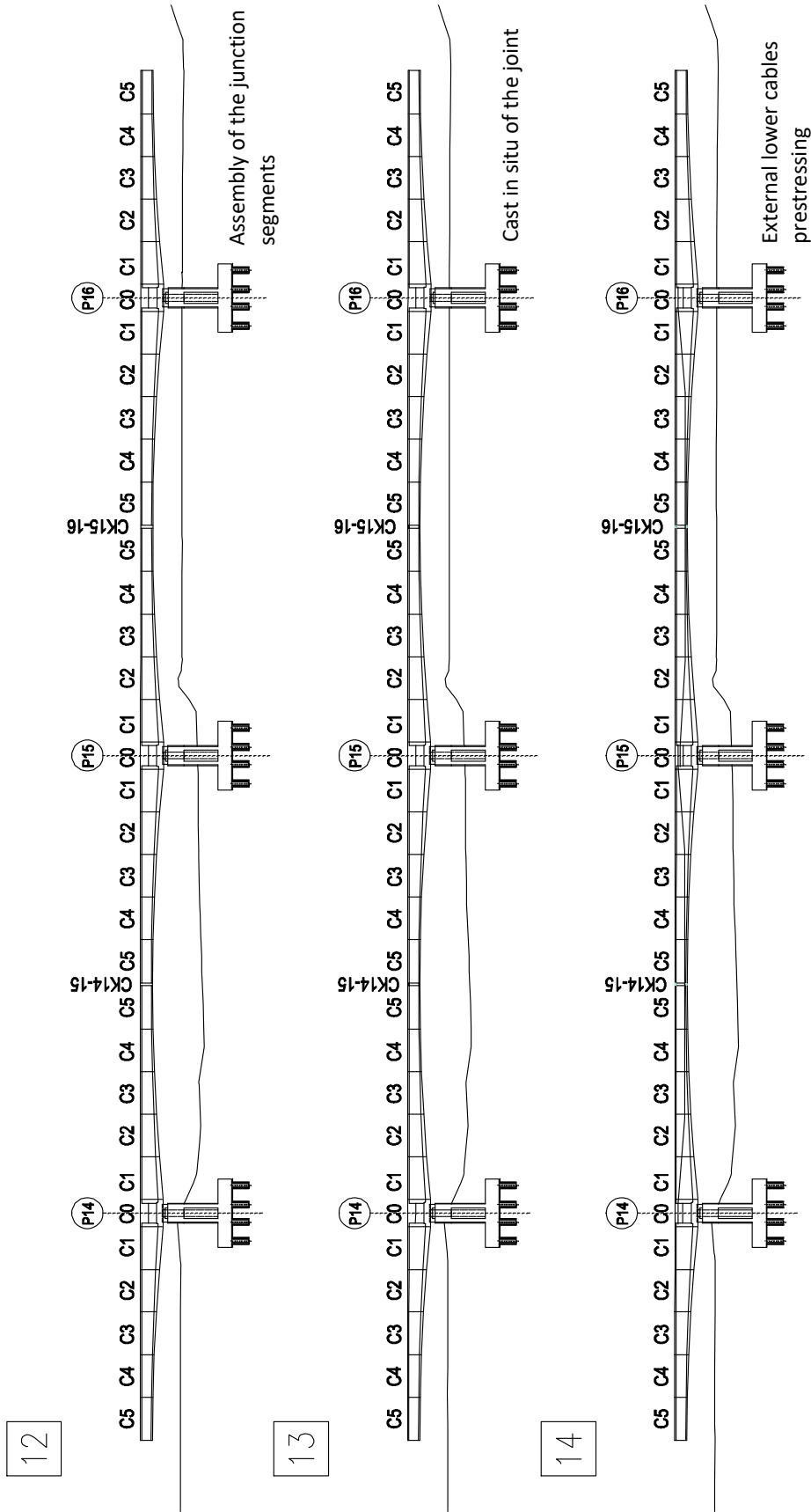
10



11



Mounting phases



Mounting phases





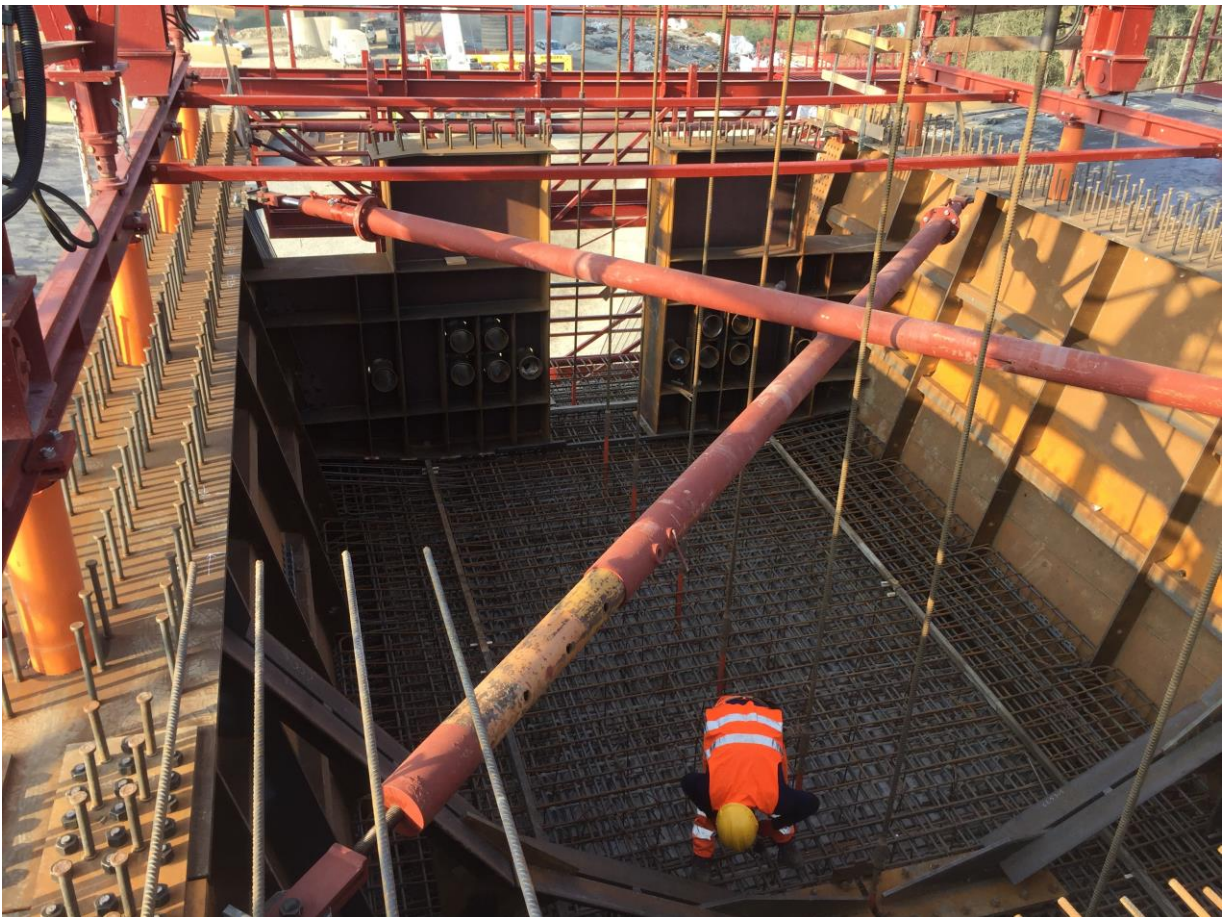
Segments assembly



Segments assembly









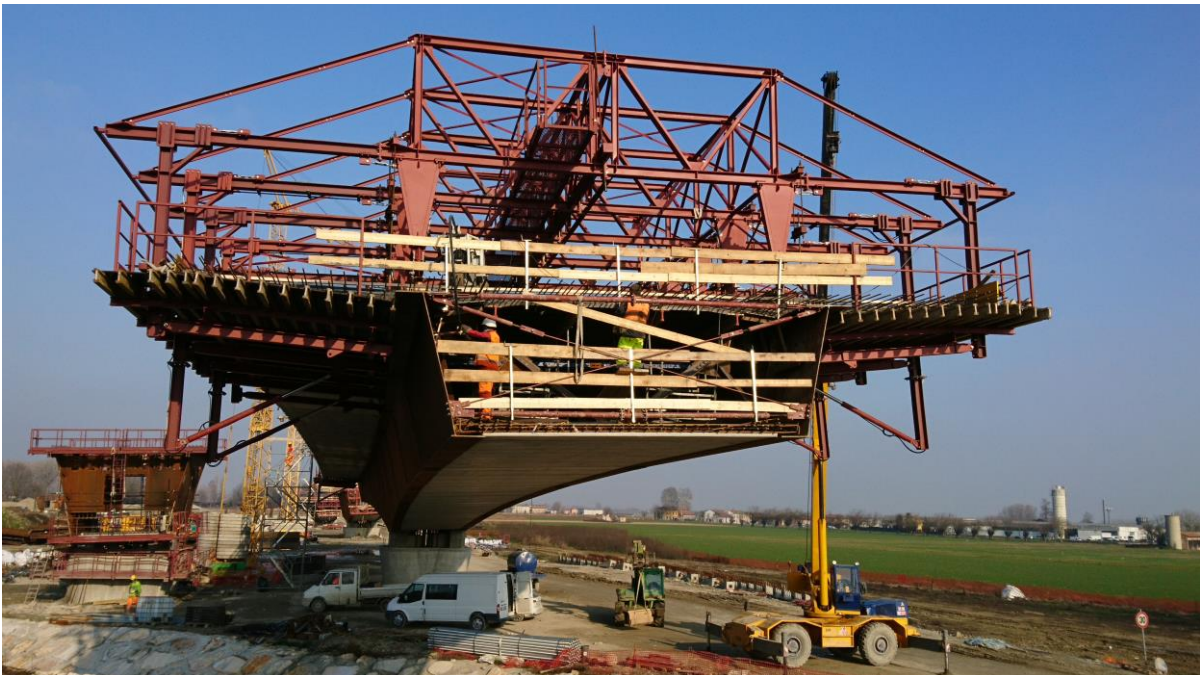
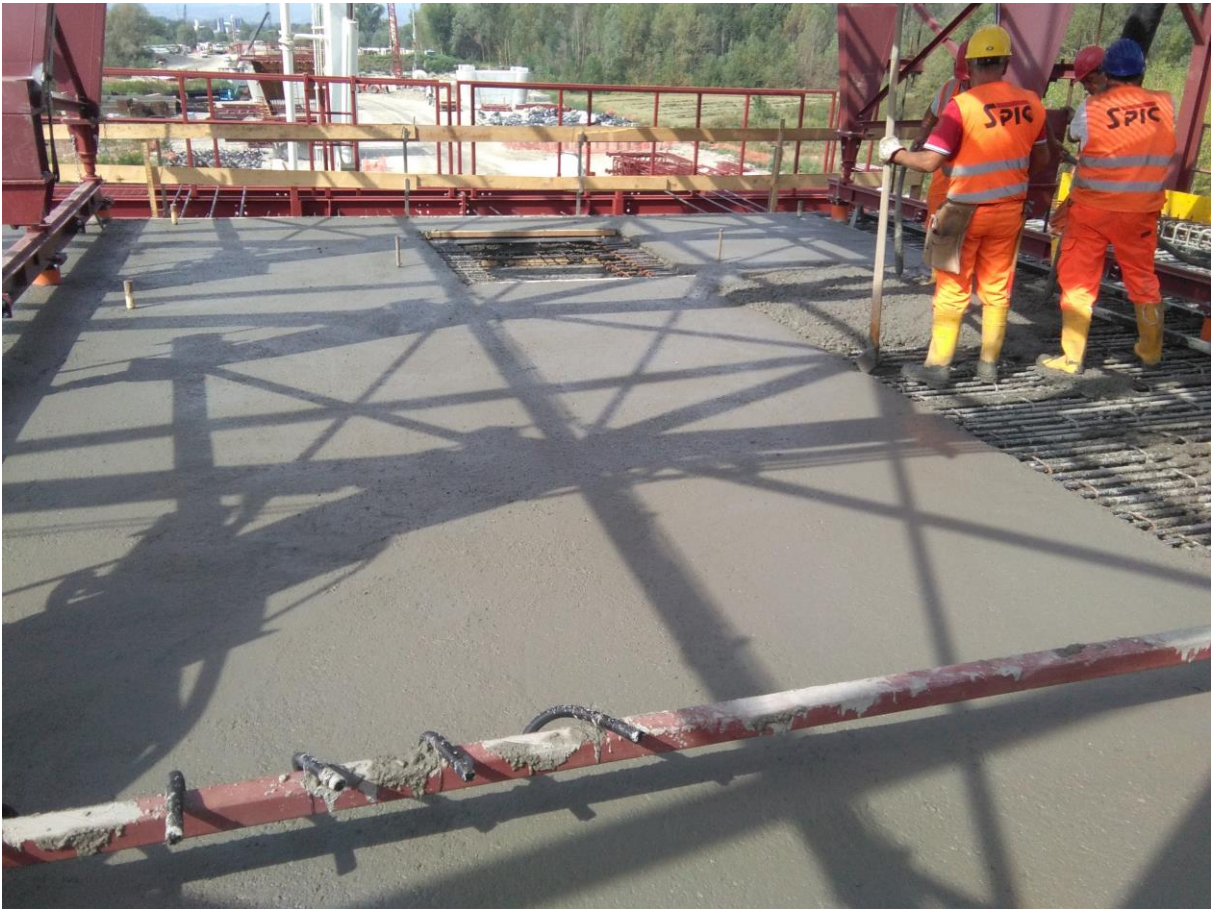
eUpper slab

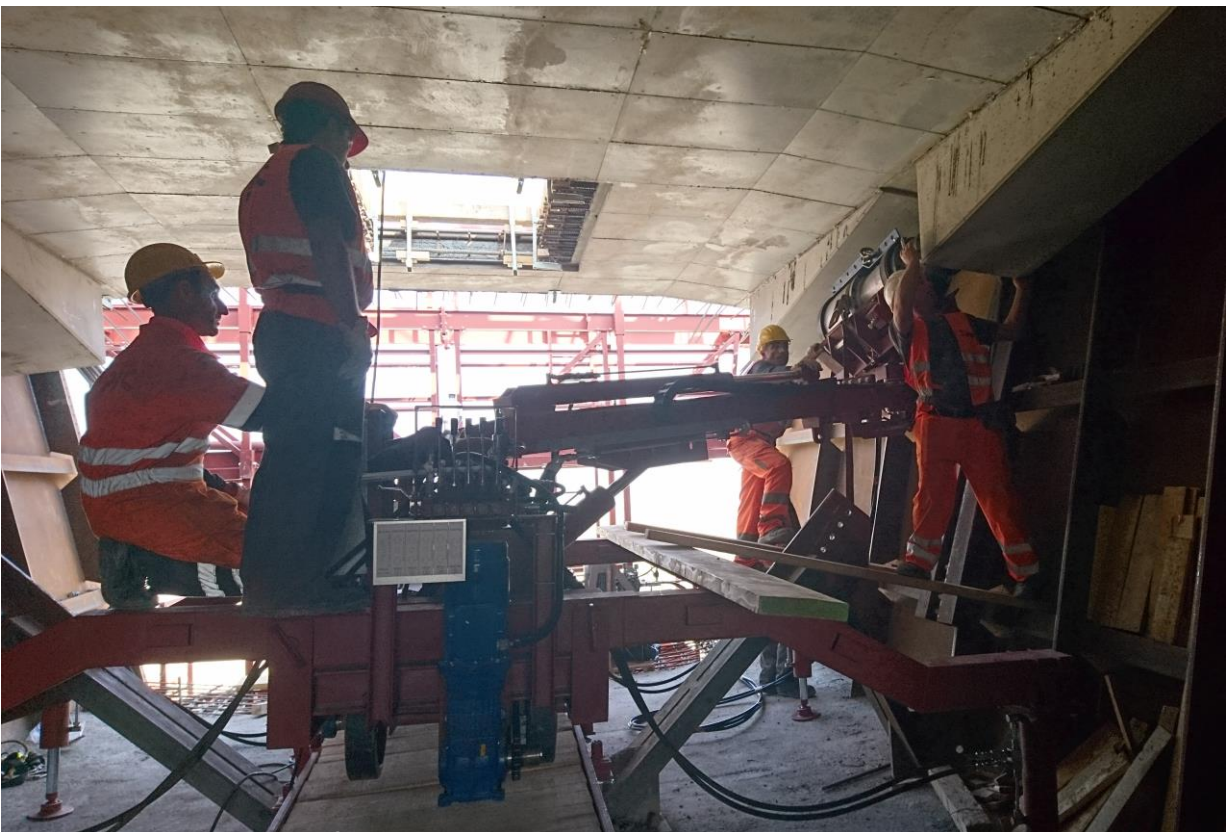






eUpper slab











eHalf deck jointing



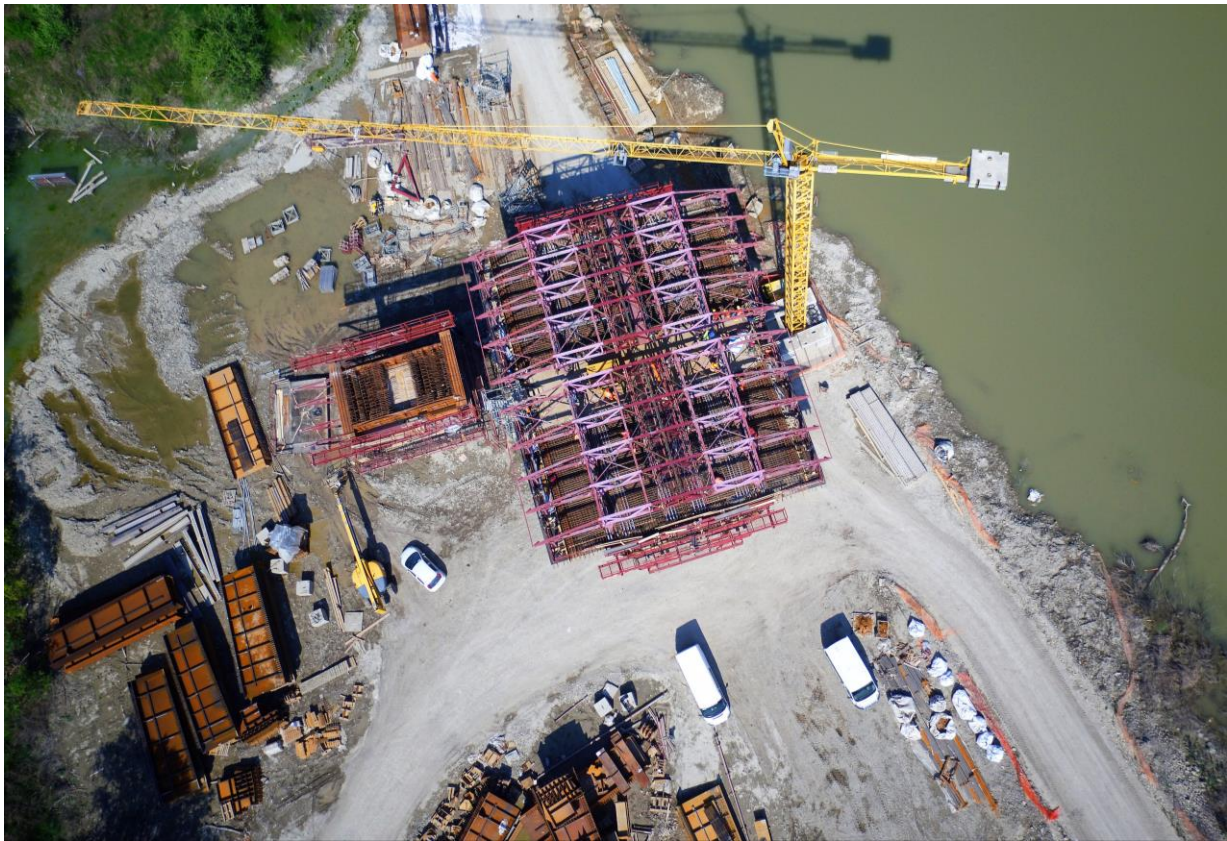








Site aerial view



Site aerial view





Site aerial view